

PART OF S.W. 1/4 OF SEC. 17 & PART OF N.W. 1/4 OF SEC. 20, T. 7N, R. 1W, S.L.B. & M. III

# MAJESTIC HEIGHTS SUBDIVISION NO. 10

LOTS 190-194, 201-203

IN PLEASANT VIEW CITY

SCALE 1" = 50'

TAXING UNIT - 11

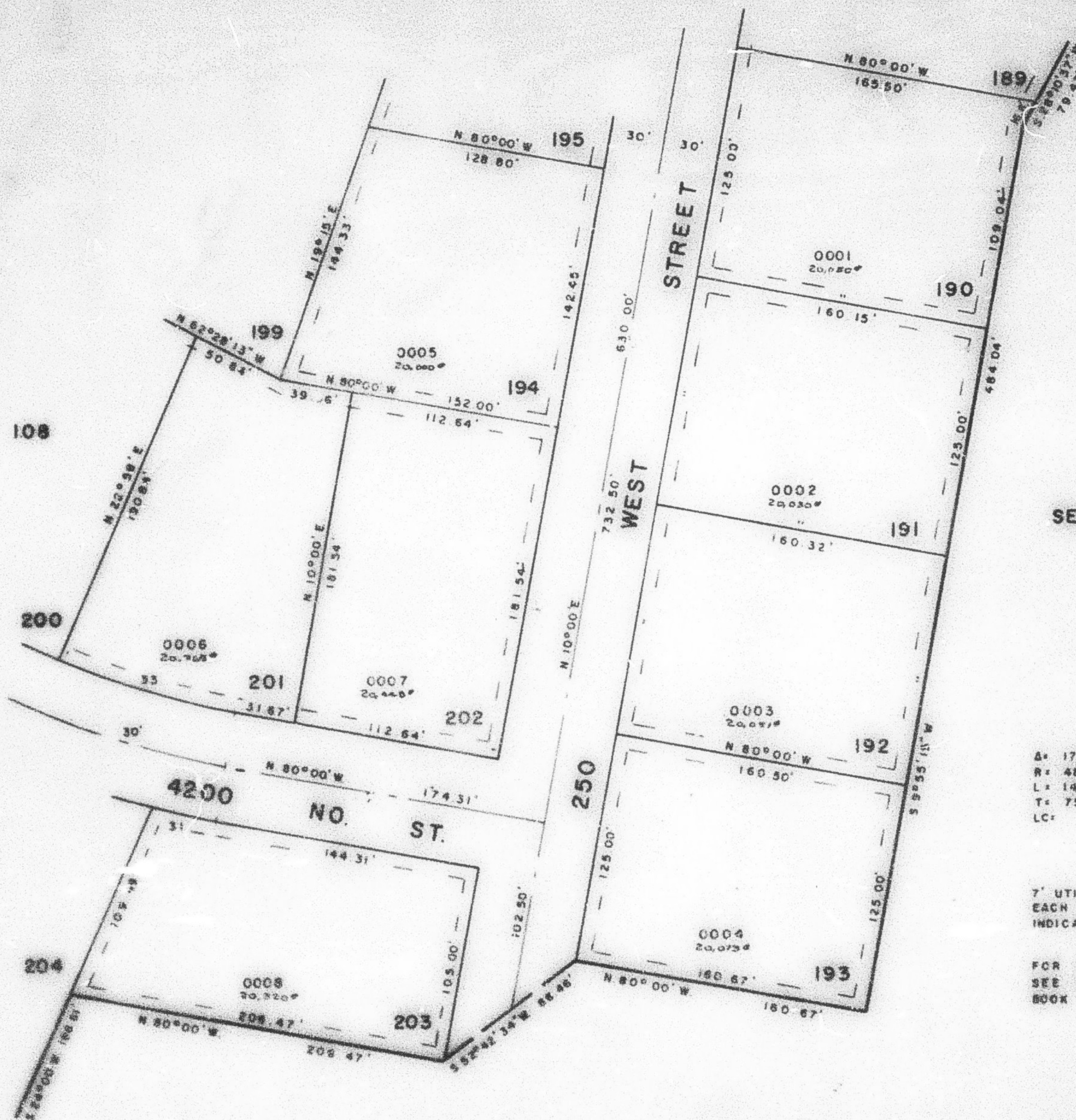
PREFIX - 18-111

SEE PAGE 110

EXCEPT WHERE OTHERWISE SHOWN  
ALL LOTS OWNED BY:  
WAGMAN CONST. CO., INC.

SEE PAGE 108

SEE PAGE 37-4



SEE PAGE 37-4

## CURVE DATA

	30	31	32
Δ	17°31'47"	3°57'38"	12°30'
R	486.44'	516.44'	486.44'
L	148.83'	35.70'	99.56'
T	75.00'		
LC		35.69'	99.38'
		S 78°01'11"E	N 73°45'W

7' UTILITY & DRAINAGE EASEMENT  
EACH SIDE OF PROPERTY LINE AS  
INDICATED BY DOTTED LINES

FOR COMPLETE ENG. DATA  
SEE ORIG. DES. PLAT. IN  
BOOK 23 PAGE 37